
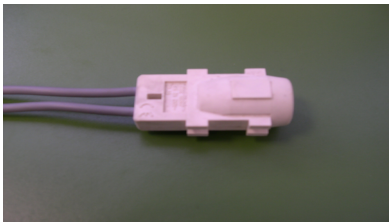



CTL DECISION SHEET (DSH)

| Standard(s) (incl. year) | Subclause(s) | Tracking No. | Year |
|---|---|---------------------|-----------------------------|
| IEC 60598-2-20 All editions | 20.7.1 | DSH 0955A | 2017 |
| Category | | | |
| LITE | | | |
| Subject | Keywords | Developed by | Approved at |
| E14 lampholder used in lighting chains | - E14 lampholder - Lighting chain - IEC 60238 | ETF5-OSM/LUM | 2018 CTL Plenary Meeting |
| Question | | | |
| <ul style="list-style-type: none"> - Clause 20.7.1 of IEC 60598-2-20 requires that Edison screw lampholders E10, E14 and E 27 shall meet the requirements of IEC 60238. - Clause 8.2 of IEC 60238 requires that lampholder shall be tested according to the gauges 7006-30 (7006-30A for candle lampholder) and 7006-31. <p>In the case shown in photos 1 and 2, the only possibility to fulfill the requirements with gauge 7006-30 is to cut the gasket around the rim of the lampholder. However in this condition the lampholder does not fulfill the requirement of 7006-31 for protection against electric shock. In the note after the fourth paragraph of clause 20.12.1 of IEC 60598-2-20 it is written that the gasket may serve as protection against accidental contact with the cap of the lamp, but only for bayonet lampholder. So, it is not applicable to the E14 lampholder.</p> <p>In the case shown in photo 3 the test with gauge 7006-31 gives negative result.</p> <p>In the two cases, the lampholders have been designed to accept E14/20 lamp cap only (and not E14/23x15 or E14/25x17). So, if the tests are performed with these kind of lamps, the test requirements are fulfilled.</p> <p>We think that this lampholder used in a lighting chain is not in compliance with the standard due to the requirement of clause 20.7.1. What is the opinion of the other laboratories?</p> | | | |
| Decision | | | |
| <p>If all requirements according to IEC 60238 as far as applicable have to be fulfilled and the gauge 7006-31 shall comply. Construction in photo 1 and 2 cannot be acceptable by cutting the gasket (changing the design of the lampholder). Construction of photo 3 is not acceptable since the test with gauge 7006-31 gives negative result (with the gasket in place).</p> | | | |
| Explanatory notes | | | |
| <p>See the photos and the standard sheet 7006-26-3.</p> <div style="display: flex; justify-content: space-around; align-items: flex-end;"> <div style="text-align: center;">  <p style="color: blue; font-weight: bold;">Photo 1</p> </div> <div style="text-align: center;">  <p style="color: blue; font-weight: bold;">Photo 2</p> </div> <div style="text-align: center;">  <p style="color: blue; font-weight: bold;">Photo 3</p> </div> </div> | | | |

61-1L © CEI/ IEC 1987

SCREW CAPS
CULOTS À VIS
E14

Page 1/2

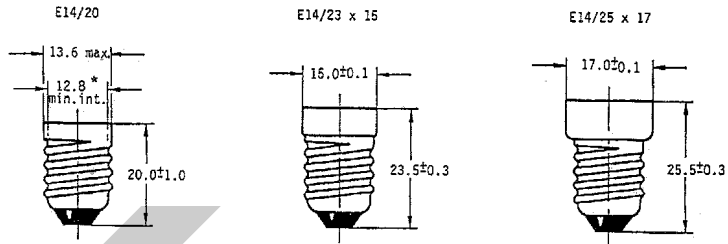
COPYRIGHT © IEC. NOT FOR COMMERCIAL USE OR REPRODUCTION

COPYRIGHT © IEC. NOT FOR COMMERCIAL USE OR REPRODUCTION

Dimensions in millimetres - Dimensions en millimètres

The drawings are intended only to indicate the dimensions essential for interchangeability.
Les dessins ont pour seul but d'indiquer les dimensions essentielles pour l'interchangeabilité.

Unmounted caps*
Culots non assemblés*



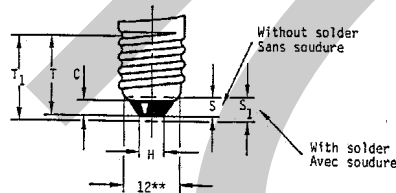
Caps may be made with a flare the diameter of which shall be not more than 1 mm greater than the maximum permissible diameter of the corresponding cap without a flare.
For finished lamps the creepage distance over insulation shall be not less than 3 mm.

Note. - The shape of the caps shown in the drawings has been chosen only for the purposes of illustration and does not constitute a requirement.

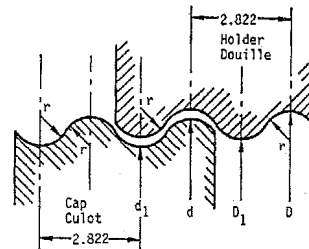
Les culots peuvent être munis d'un évasement dont le diamètre ne doit pas excéder de plus de 1 mm le diamètre maximal permis du culot correspondant sans évasement.
Pour les lampes terminées, la ligne de fuite sur l'isolant ne doit pas être inférieure à 3 mm.

Note. - La forme du culot représenté dans ces dessins a été uniquement choisie pour les besoins de l'illustration et ne constitue pas une prescription.

Caps on finished lamps
Culots sur lampes terminées



Right-hand thread
Filet à droite



** This value denotes the diameter of the reference circle to which dimensions S and S₁ are referred.
** Cette valeur correspond au diamètre du cercle de référence auquel les dimensions S et S₁ se réfèrent.

7004-23-6

CEI Publication 61-1(L) - 1987
IEC Publication 61-1(L) - 1987